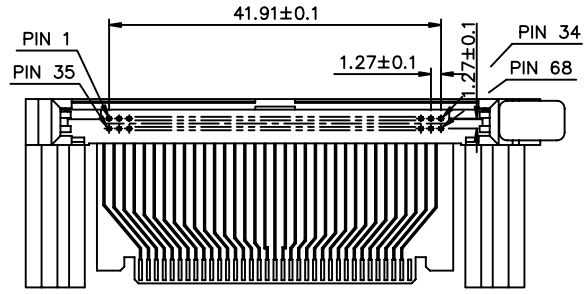
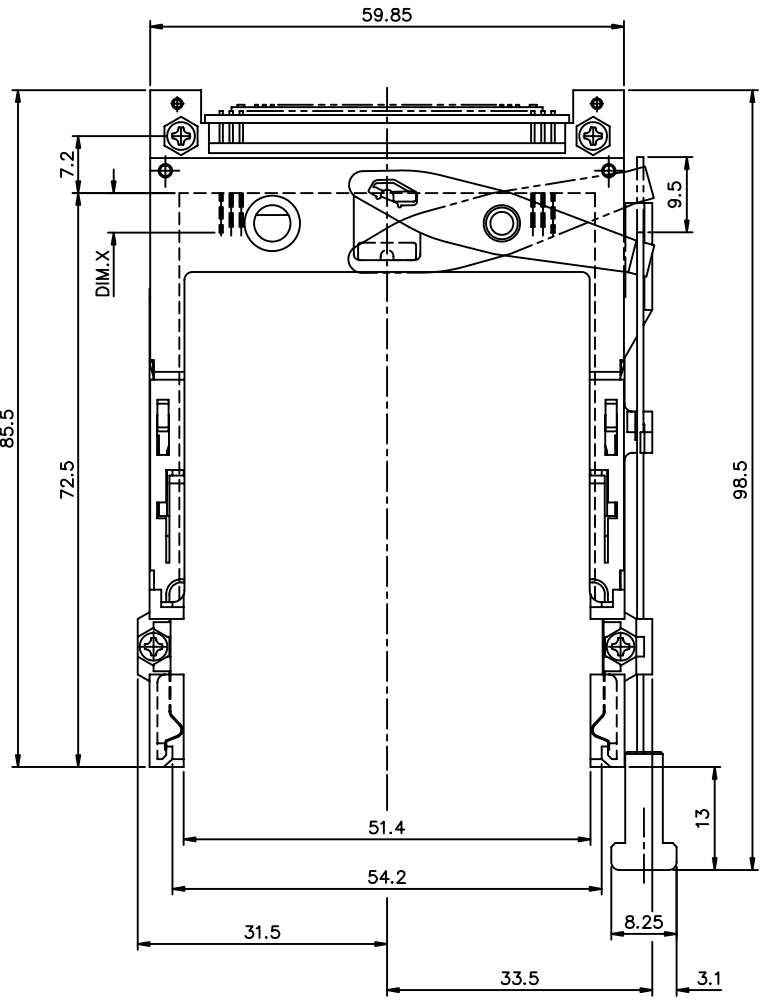
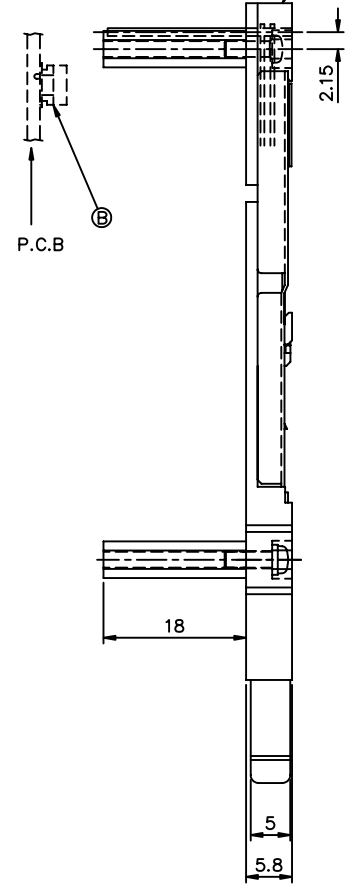


FCI CONFIDENTIAL



This document is the property of and embodies CONFIDENTIAL and PROPRIETARY information of FCI. No part of the information shown on this document may be used in any way or disclosed to others without the written consent of FCI. Copyright FCI.

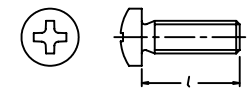
| |
|---------------------|
| PRODUCT NO. |
| 74031-118CA/118CALF |
| 74031-118MCALF |



NOTES:

1. 8mm MIN. CARD EJECT.
2. EJECT TRAVEL: 9.5mm
3. PUSH ROD LOCATION AND P.C.B. SIDE ARE AS APPEARS INSTALLED.
4. MATERIAL
 - 4.1 HEADER ASS'Y
HOUSING: PLASTIC UL94V-0 BLACK
PIN : COPPY ALLOY
PCB : FR4
 - 4.2 MECHANISM ASS'Y
PLASTIC : GUIDE: POLYPHTHARAMID UL94V-0 BLACK
: BUTTON: POLYPHTHARAMID UL94V-0 BLACK
PLATE AND PUSH ROD : STAINLESS
EMI CONTACT: PHOSPHOR BRONZE
STAND-OFF : BRASS
5. FINISH (PIN)
UNDER PLATING : 0.5 um MIN. Ni
CONTACT AREA : 0.1 um MIN. GOLD OVER
0.8 um MIN. Pd-Ni
SPECIAL COST PLATING IS 0.25um GOLD
SOLDER TAIL : 2.5 um MIN. Sn-Pb (FOR TIN LEAD OPTION)
2.5 um MIN. PURE TIN (FOR LEAD FREE OPTION)
STAND-OFF : 3 um MIN. Ni.
6. DIM "X"

| | | |
|----------|---------|------------------|
| 4.25±0.1 | 3.5±0.1 | 5.0±0.1 |
| OTHERS | 36,67 | 1,17,34,35,51,68 |
7. RECOMMENDED M2 SCREW LENGTH (l): 5.0mm MIN.~15.0mm MAX.
8. IF LEAD FREE P.N.THE HOUSING WILL WITHSTAND EXPOSURE TO 260°C PEAK TEMPERATURE FOR 10 SECONDS IN A WAVE SOLDER APPLICATION WITH A 1.00MM MINIMUM THICK CIRCUIT BOARD.
9. IF LEAD FREE P/N.THE PRODUCT MEETS EUROPEAN UNION DIRECTIVES AND OTHER COUNTRY REGULATIONS AS DESCRIBED IN GS-22-008
10. LEAD FREE P/N PACKAGING MEETS GS-14-920 SPECIFICATION



ORDERING INFORMATION

| NAME | PART NO. | Q'TY |
|----------------------|-----------------------------|------|
| Ⓐ EJECT HEADER ASS'Y | 74031-118CA/118CALF/118MLF | 1 |
| Ⓑ MATING RECEPTACLE | 91931-31169/31169LF/31169LF | 1 |

| | | | | |
|---------------|---------------------|---------------------------------------|--------------------|---------------------------|
| mat'l. code | surface ISD 1302 | tolerance ISD 406 ISD 118 | projection 118 | product family PCMCIA |
| ltr ecn no dr | date | tolerances unless otherwise specified | title | |
| A T70299 | W L 09/08/97 | .X±.3 | MM | 68 POS EJECTOR HEADER HSG |
| B T90062 | W L 02/24/99 | linear .XX±.13 | scale | |
| C T00304 | W L 10/09/00 | ±2' | .XXX±.051 | |
| D T03-0254 | W L 06/25/03 | chr | Mike Zhou 06/05/06 | dwg no sheet 1 of 5 size |
| E N05-0125 | W B 05/10/05 | engr | Mike Zhou 06/05/06 | 74031 A4 |
| F N06-0110 | M Z 06/22/06 | chr | Mike Zhou 06/05/06 | type CUSTOMER Drawing |
| | | appa | Jack Wang 06/05/06 | |
| sheet | revision | F F E E E | | |
| index | sheet | 1 2 3 4 5 | | |

PDM! Rev:F

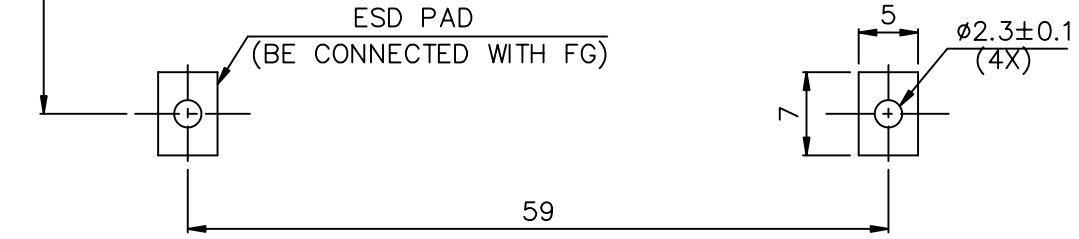
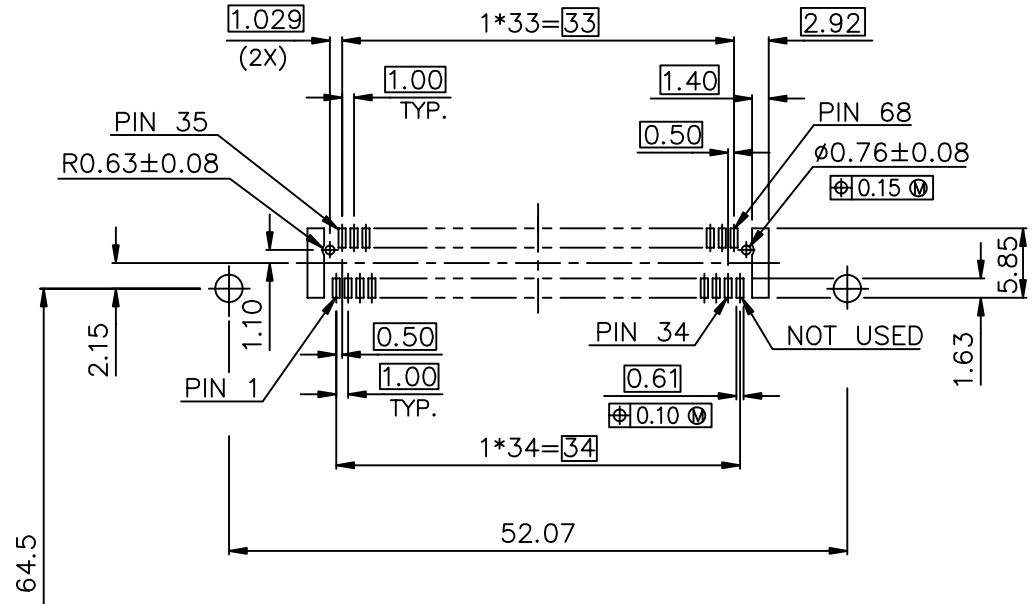
STATUS: **Released**

Printed: Feb 01, 2007

FCI CONFIDENTIAL

This document is the property of and embodies CONFIDENTIAL and PROPRIETARY information of FCI. No part of the information shown on this document may be used in any way or disclosed to others without the written consent of FCI. Copyright FCI.

| |
|---------------------|
| PART NUMBER |
| 74031-118CA/118CALF |
| 74031-118MCALF |

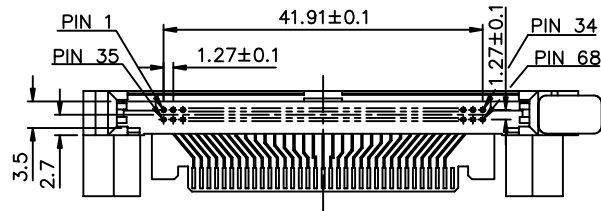
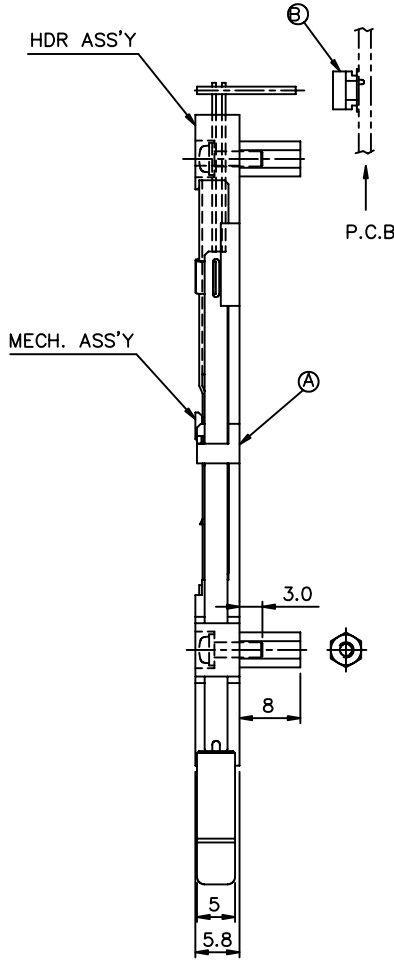
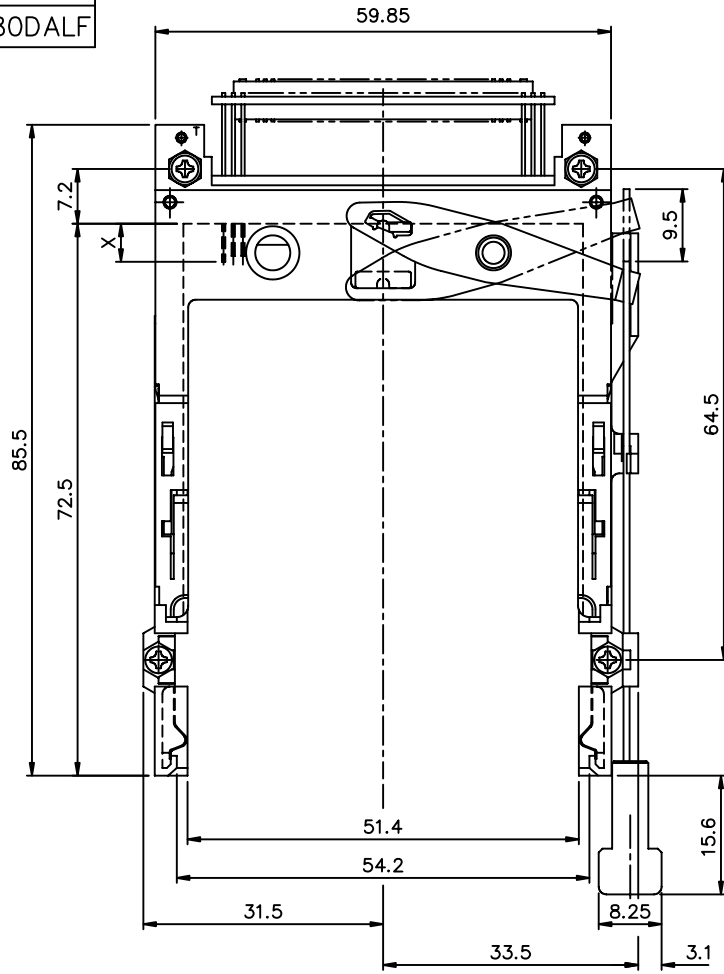


BOARD VIEW FROM CONNECTOR MOUNTED SIDE
TOP OF BOARD IN APPLICATION

| | | | | | | | | | |
|-------------------|--|---------------------------------------|--|-------------------------------|--|------------|--|-----------------------------------|--|
| mat'l. code | | surface | | tolerance | | projection | | product family | |
| | | ISD 1302 | | ISD 406 ISD 118 | | | | PCMCIA | |
| ltr ecn nodr date | | tolerances unless otherwise specified | | | | | | | |
| F | | angles | | linear | | | | 68 POS EJECTOR HEADER HSG | |
| | | ±2' | | .X±.3 .XX±.13 .XXX±.051 | | scale | | dwg no 74031 sheet 2 of 5 size A4 | |
| | | dwr | | Mike Zhou 06/05/06 | | | | type CUSTOMER Drawing | |
| | | engr | | Mike Zhou 06/05/06 | | | | | |
| | | chr | | Mike Zhou 06/05/06 | | | | | |
| | | appr | | Jack Wang 06/05/06 | | | | | |
| sheet index | | revision sheet | | | | | | | |

FCI CONFIDENTIAL

PRODUCT NO.
74031-080DA
74031-080DALF



ABOVE P.C.B.
(RIGHT PUSH-ROD)

NOTES:

1. 8mm MIN. CARD EJECT.
2. EJECT TRAVEL: 9.5mm
3. PUSH ROD LOCATION AND P.C.B. SIDE ARE AS APPEARS INSTALLED.
4. MATERIAL
 - 4.1 HEADER ASS'Y
PLASTIC : HOUSING ...LCP UL94V-0 BLACK
PIN : PHOSPHOR BRONZE
PCB : FR4
 - 4.2 MECHANISM ASS'Y
PLASTIC : GUIDE: POLYPHTHARAMID UL94V-0 BLACK
: BUTTON: POLYPHTHARAMID UL94V-0 BLACK
PLATE AND PUSH ROD : STAINLESS
EMI CONTACT: PHOSPHOR BRONZE
STAND-OFF : BRASS
5. FINISH (PIN)
 - UNDER PLATING : 0.5 um MIN. Ni
 - CONTACT AREA : 0.1 um MIN. GOLD OVER
 - : 0.8 um MIN. Pd-Ni
 - SOLDER TAIL : 2.5 um MIN. Sn-Pb (FOR TIN LEAD OPTION)
 - : 2.5 um MIN. PURE TIN (FOR LEAD FREE OPTION)
 - STAND-OFF : 3 um MIN. Ni.
6. DIM "X"

| | | |
|----------|---------|------------------|
| 4.25±0.1 | 3.5±0.1 | 5.0±0.1 |
| OTHERS | 36,67 | 1,17,34,35,51,68 |
7. IF LEAD FREE P.N.THE HOUSING WILL WITHSTAND EXPOSURE TO 260°C PEAK TEMPERATURE FOR 10 SECONDS IN A WAVE SOLDER APPLICATION WITH A 1.00MM MINIMUM THICK CIRCUIT BOARD.
8. IF LEAD FREE P/N.THE PRODUCT MEETS EUROPEAN UNION DIRECTIVES AND OTHER COUNTRY REGULATIONS AS DESCRIBED IN GS-22-008
9. LEAD FREE P/N PACKAGING MEETS GS-14-920 SPECIFICATION

ORDERING INFORMATION

| NAME | PART NO. | Q'TY |
|----------------------|---------------------|------|
| Ⓐ EJECT HEADER ASS'Y | 74031-080DA/080DALF | 1 |
| Ⓑ MATING RECEPTACLE | 91931-31169/31169LF | 1 |

| | | | | |
|-------------------|---------------------------------------|------------------------------|-------------------|---------------------------|
| mat'l. code | surface ISD 1302 | tolerance ISD 406 ISD 118 | projection 118 | product family PCMCIA |
| ltr ecn nodr date | tolerances unless otherwise specified | | | title |
| E | angles ±2' | linear ±0.3 | MM | 68 POS EJECTOR HEADER HSG |
| | | | scale | |
| dr | Mike Zhou | 06/05/06 | | dwg no |
| engr | Mike Zhou | 06/05/06 | | sheet 3 of 5 |
| chr | Mike Zhou | 06/05/06 | | size |
| appr | Jack Wang | 06/05/06 | | A4 |
| | | | | type CUSTOMER Drawing |
| sheet index | revision sheet | | | |

PDM! Rev:F

STATUS: Released

Printed: Feb 01, 2007

6

This document is the property of and embodies CONFIDENTIAL and PROPRIETARY information of FCI. No part of the information shown on this document may be used in any way or disclosed to others without the written consent of FCI. Copyright FCI.

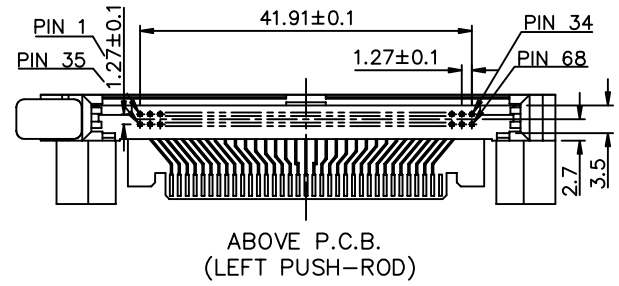
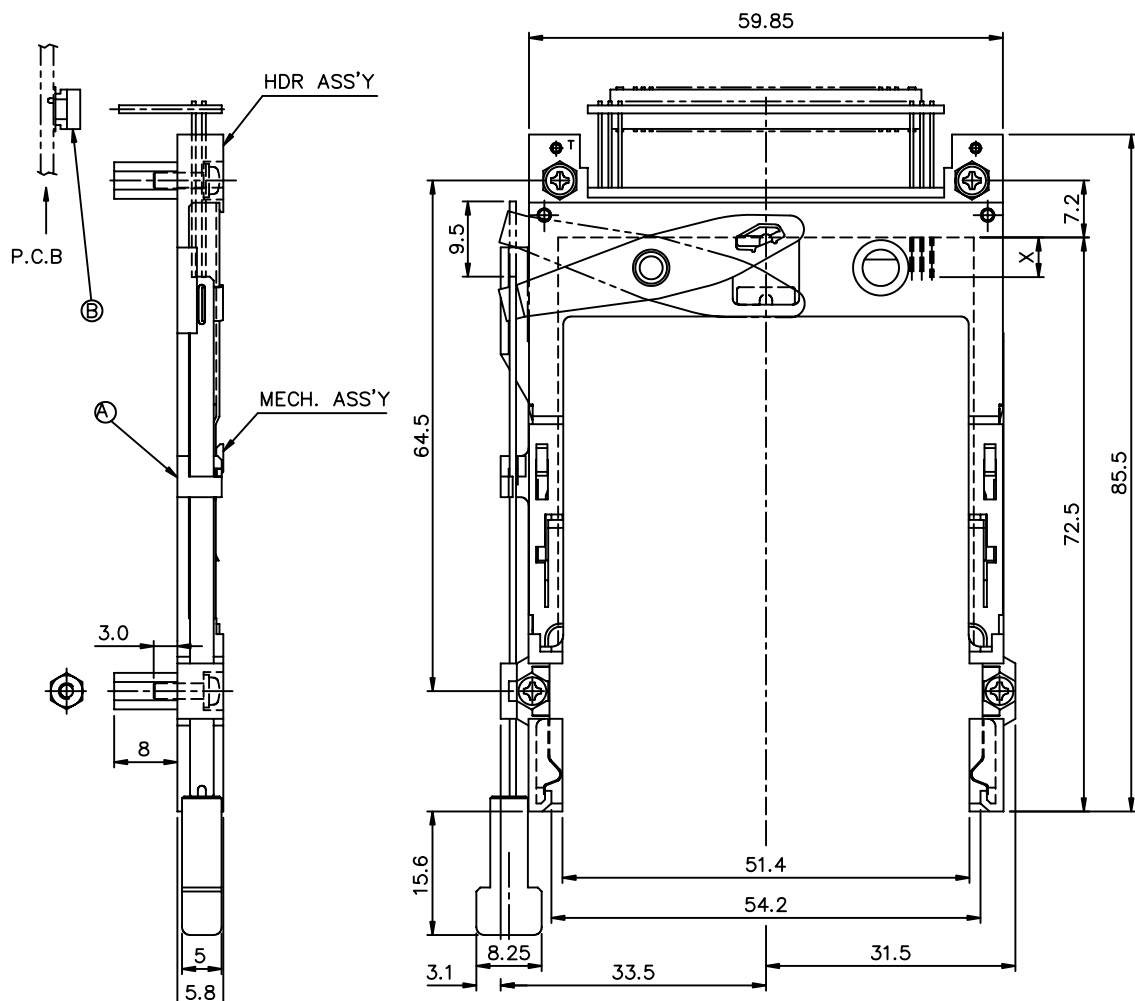
FCI
FCIconnect.com

FCI CONFIDENTIAL

FCI
FCIconnect.com

This document is the property of and embodies CONFIDENTIAL and PROPRIETARY information of FCI. No part of the information shown on this document may be used in any way or disclosed to others without the written consent of FCI. Copyright FCI.

PRODUCT NO.
74031-180DA/180DALF



NOTES:

1. 8mm MIN. CARD EJECT.
2. EJECT TRAVEL: 9.5mm
3. PUSH ROD LOCATION AND P.C.B. SIDE ARE AS APPEARS INSTALLED.
4. MATERIAL
 - 4.1 HEADER ASS'Y
 - PLASTIC : HOUSING ...LCP UL94V-0 BLACK
 - PIN : PHOSPHOR BRONZE
 - PCB : FR4
 - 4.2 MECHANISM ASS'Y
 - PLASTIC : GUIDE: POLYPHTHARAMID UL94V-0 BLACK
 - : BUTTON: POLYPHTHARAMID UL94V-0 BLACK
 - PLATE AND PUSH ROD : STAINLESS
 - EMI CONTACT: PHOSPHOR BRONZE
 - STAND-OFF : BRASS
5. FINISH (PIN)
 - UNDER PLATING : 0.5 um MIN. Ni
 - CONTACT AREA : 0.1 um MIN. GOLD OVER
 - 0.8 um MIN. Pd-Ni
 - SOLDER TAIL : 2.5 um MIN. Sn-Pb (FOR TIN LEAD OPTION)
 - 2.5 um MIN. PURE TIN (FOR LEAD FREE OPTION)
 - STAND-OFF : 3 um MIN. Ni.
6. DIM "X"

| | | |
|----------|---------|------------------|
| 4.25±0.1 | 3.5±0.1 | 5.0±0.1 |
| OTHERS | 36,67 | 1,17,34,35,51,68 |
7. IF LEAD FREE P.N.THE HOUSING WILL WITHSTAND EXPOSURE TO 260°C PEAK TEMPERATURE FOR 10 SECONDS IN A WAVE SOLDER APPLICATION WITH A 1.00MM MINIMUM THICK CIRCUIT BOARD.
8. IF LEAD FREE P/N.THE PRODUCT MEETS EUROPEAN UNION DIRECTIVES AND OTHER COUNTRY REGULATIONS AS DESCRIBED IN GS-22-008
9. LEAD FREE P/N PACKAGING MEETS GS-14-920 SPECIFICATION

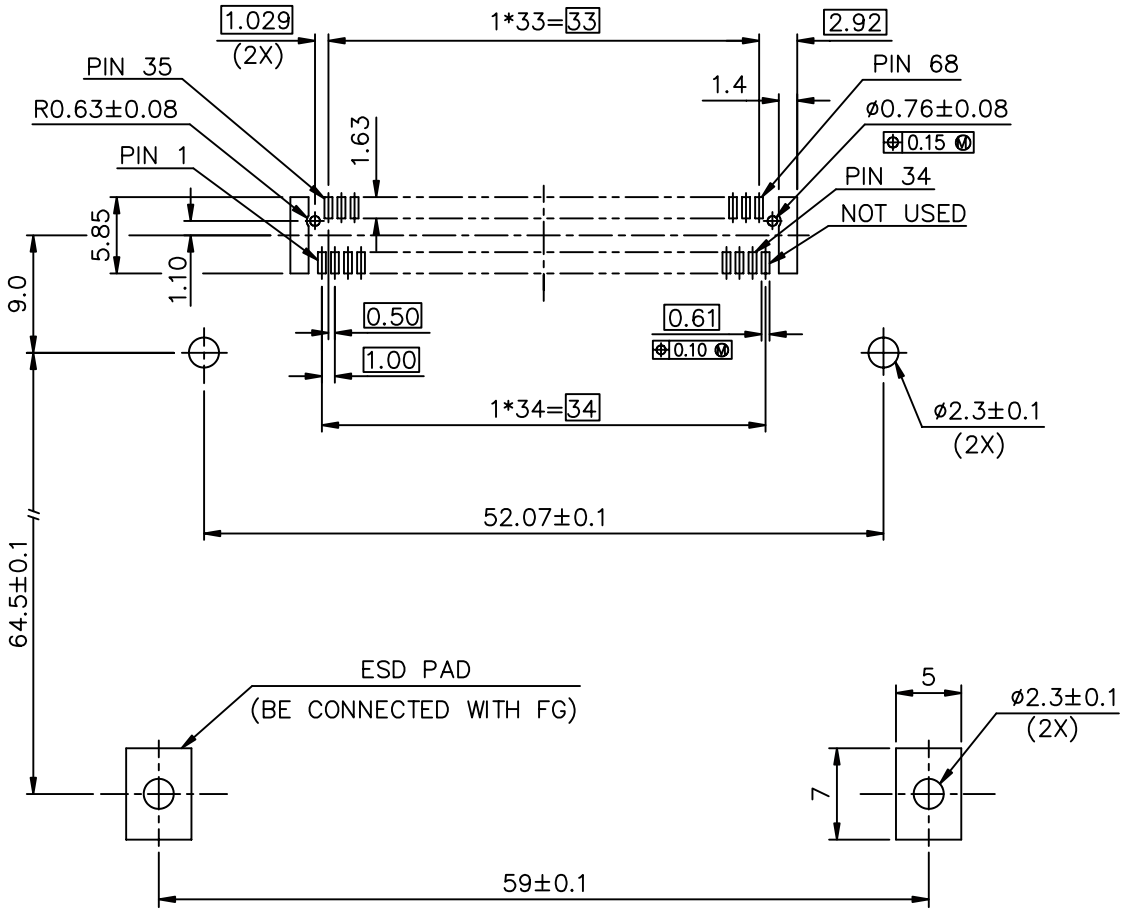
ORDERING INFORMATION

| NAME | PART NO. | Q'TY |
|------------------------|---------------------|------|
| (A) EJECT HEADER ASS'Y | 74031-180DA/180DALF | 1 |
| (B) MATING RECEPTACLE | 91931-31169/31169LF | 1 |

| | | | | |
|-------------------|---------------------------------------|------------------------------|-------------------|---------------------------|
| mat'l. code | surface ISD 1302 | tolerance ISD 406 ISD 118 | projection 100 | product family PCMCIA |
| ltr ecn nodr date | tolerances unless otherwise specified | | | title |
| E | angles ±2' | linear ±0.3 | MM ←→ | 68 POS EJECTOR HEADER HSG |
| | dr | Mike Zhou 06/05/06 | | dwg no |
| | engr | Mike Zhou 06/05/06 | | sheet 4 of 5 |
| | chr | Mike Zhou 06/05/06 | | size 74031 A4 |
| | appr | Jack Wang 06/05/06 | | type CUSTOMER Drawing |
| sheet index | revision sheet | | | |

FCI CONFIDENTIAL

| |
|---------------|
| PRODUCT NO. |
| 74031-080DA |
| 74031-180DA |
| 74031-080DALF |
| 74031-180DALF |



4 CARD INSERTION DIRECTION

| | | | | | | | | | |
|-------------------|--|---------------------------------------|--|-----------|--|------------|--|--|--|
| mat'l. code | | surface | | tolerance | | projection | | product family | |
| | | ISD 1302 | | ISD 406 | | ISO 1181 | | PCMCIA | |
| ltr ecn nodr date | | tolerances unless otherwise specified | | angles | | linear | | title | |
| | | ±0.3 | | ±2' | | MM | | EJECTOR HEADER ASS'Y 68POS. SMT, TYPE 1/2/3 | |
| | | dr | | Mike Zhou | | 06/05/06 | | dwg no | |
| | | engr | | Mike Zhou | | 06/05/06 | | sheet 5 of 5 | |
| | | chr | | Mike Zhou | | 06/05/06 | | size | |
| | | appr | | Jack Wang | | 06/05/06 | | A4 | |
| | | | | | | | | type CUSTOMER Drawing | |
| sheet index | | revision sheet | | | | | | | |

This document is the property of and embodies CONFIDENTIAL and PROPRIETARY information of FCI. No part of the information shown on this document may be used in any way or disclosed to others without the written consent of FCI. Copyright FCI.